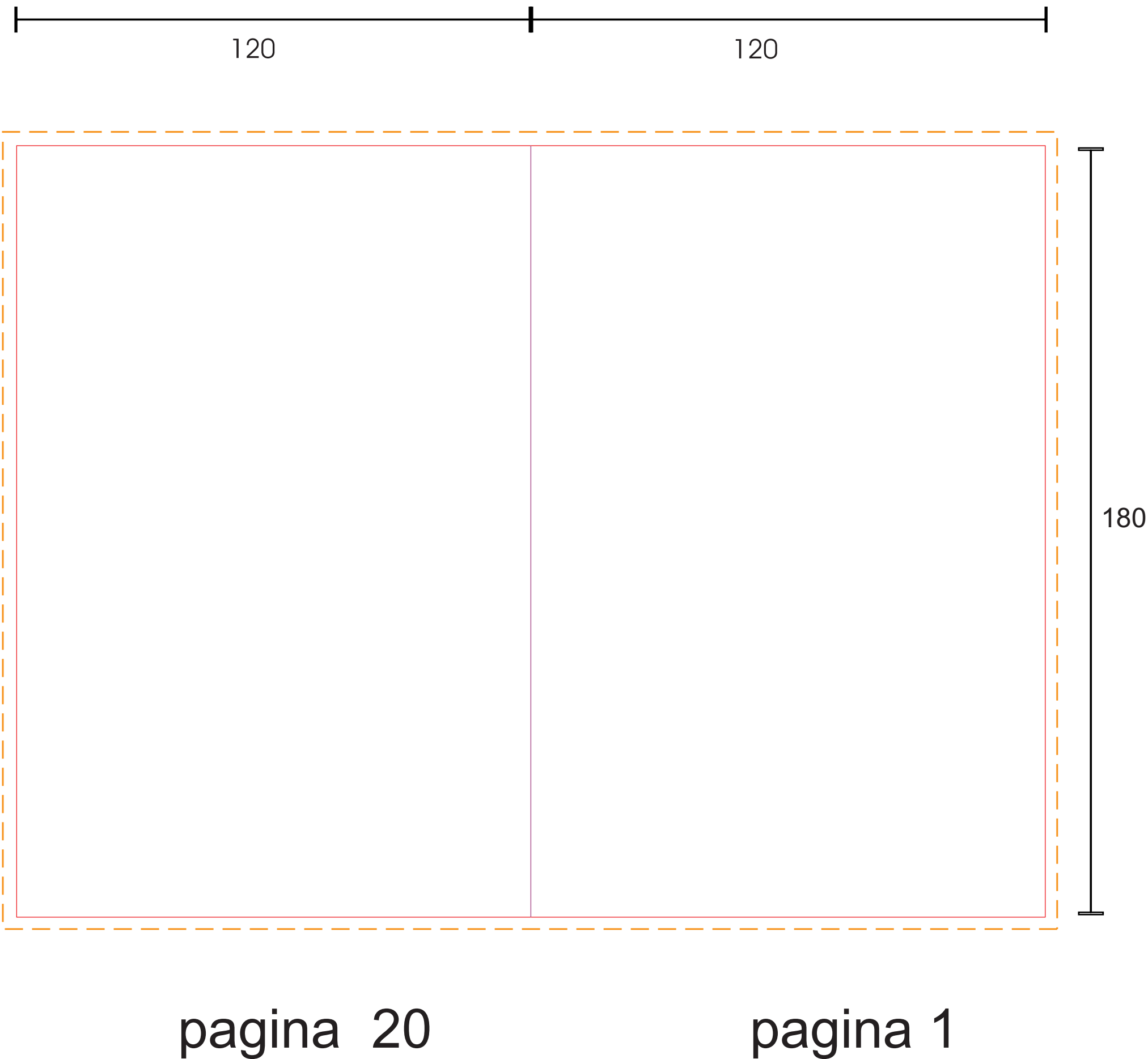


— Taglio

— Piega

— Quotatura

- - - - - Abbondanza per la grafica



120

120

180

pagina 20

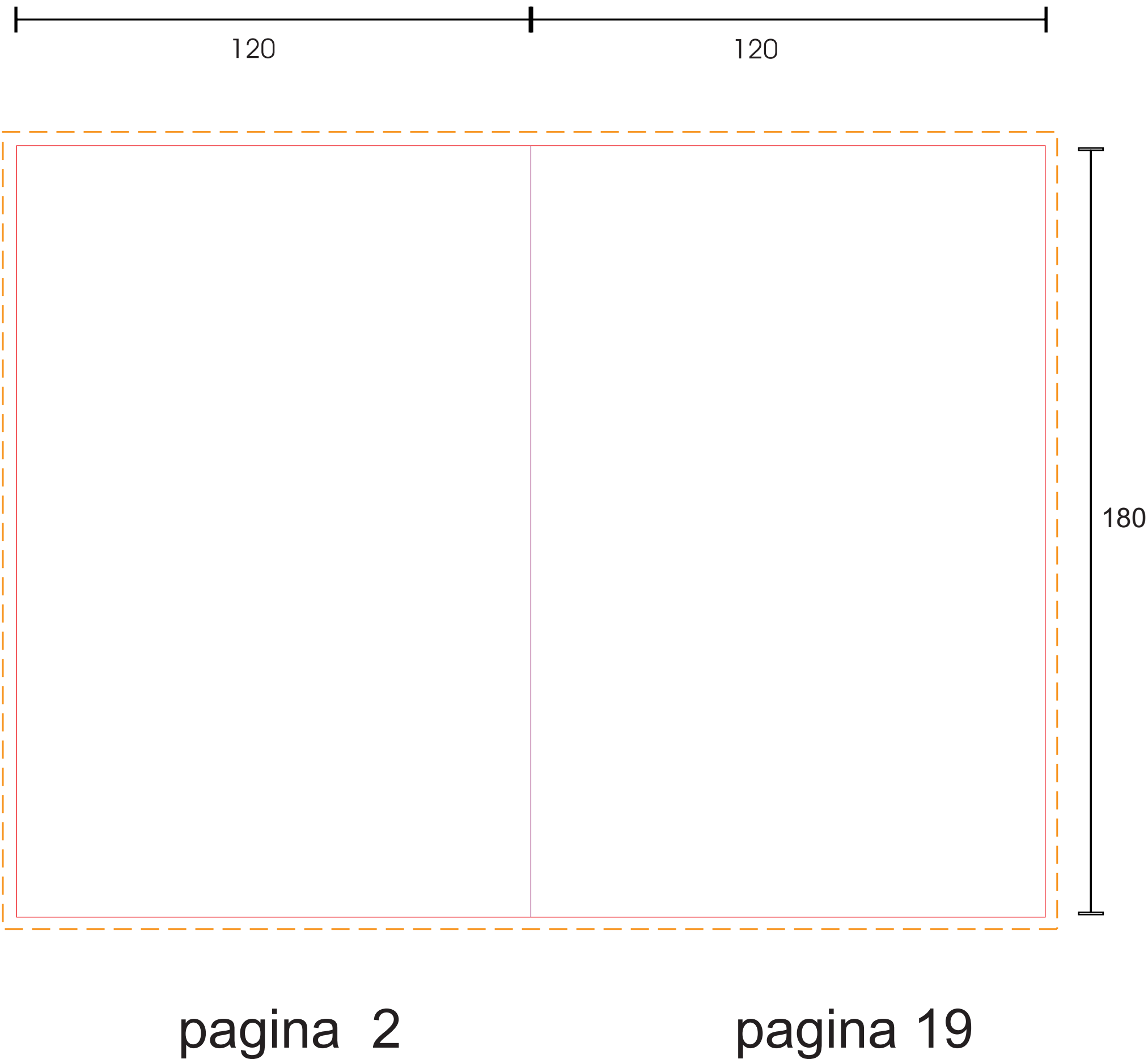
pagina 1

— Taglio

— Piega

— Quotatura

- - - - - Abbondanza per la grafica

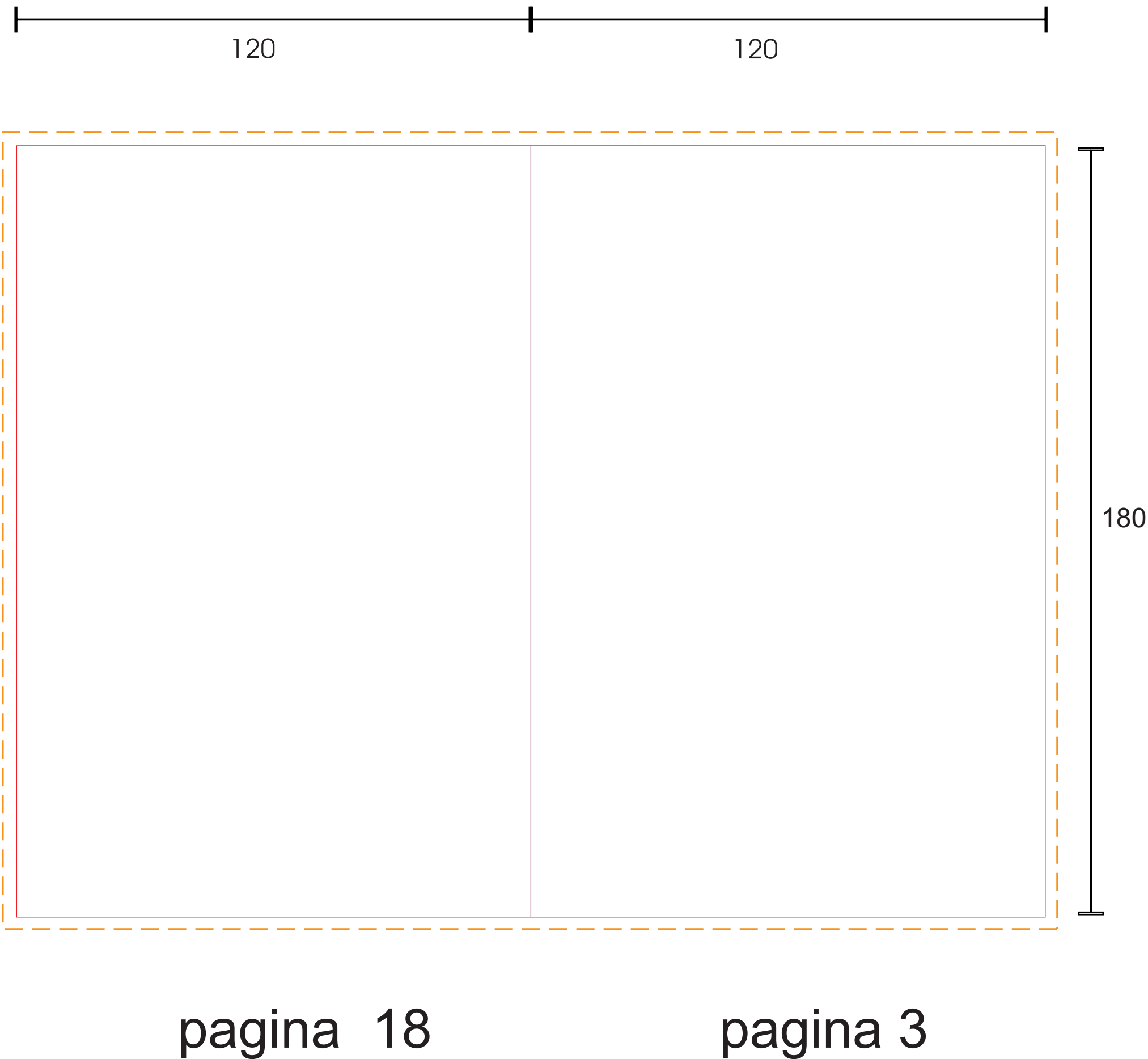


— Taglio

— Piega

— Quotatura

- - - - - Abbondanza per la grafica

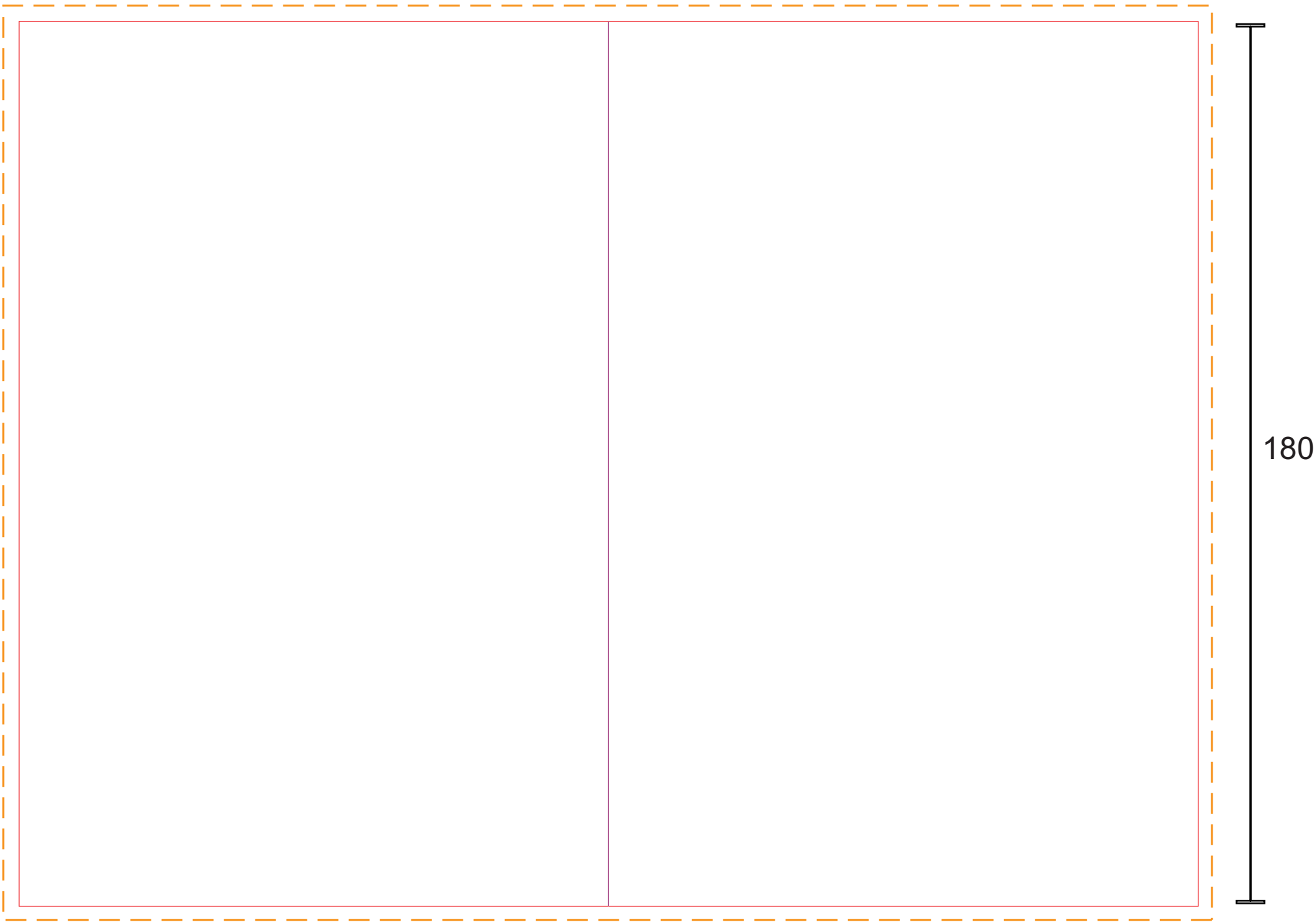
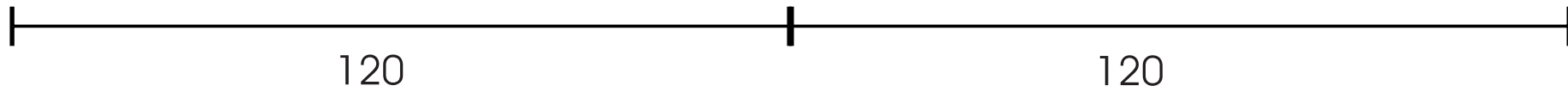


— Taglio

— Piega

— Quotatura

- - - - - Abbondanza per la grafica



pagina 4

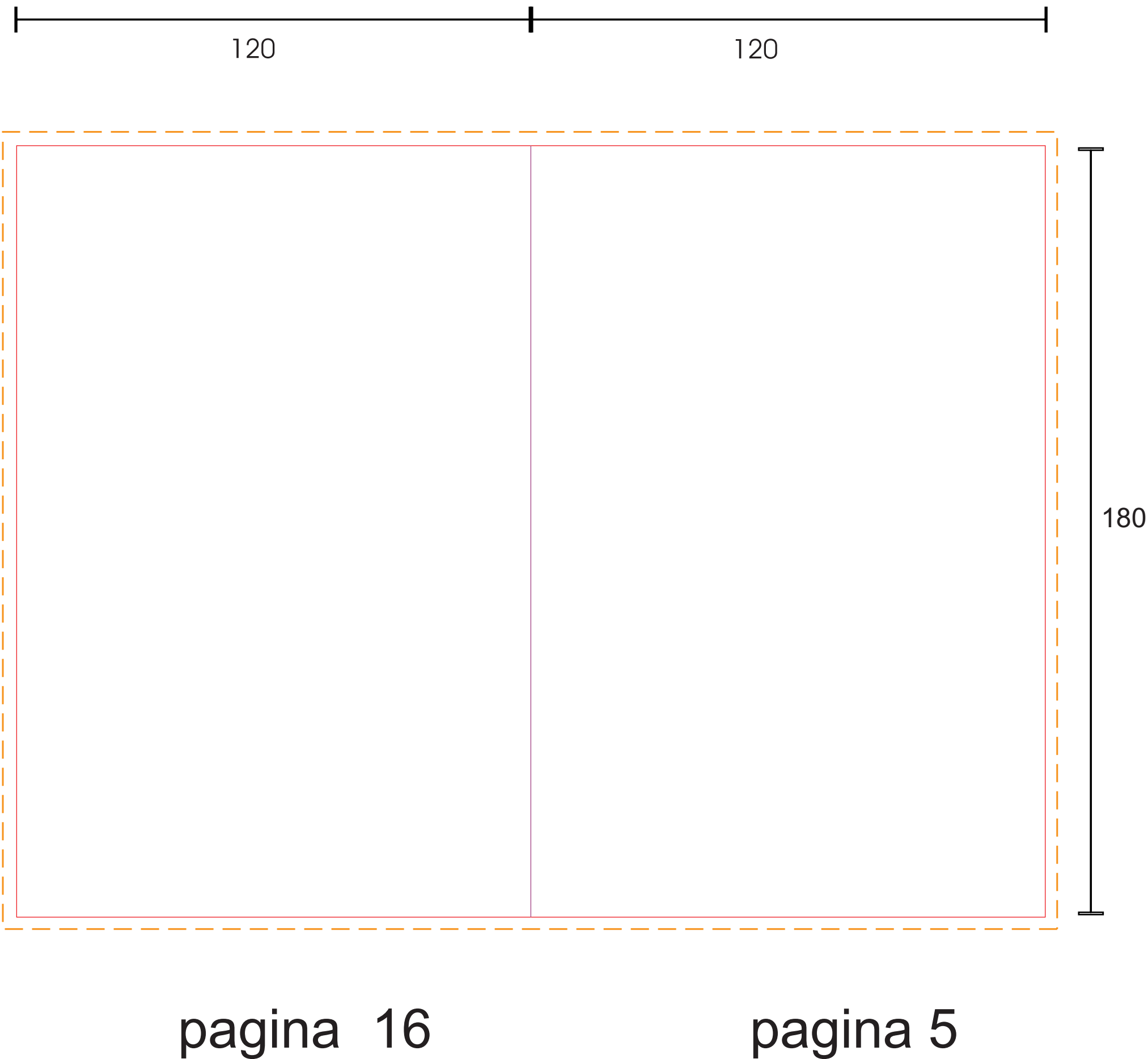
pagina 17

— Taglio

— Piega

— Quotatura

- - - - - Abbondanza per la grafica



120

120

180

pagina 16

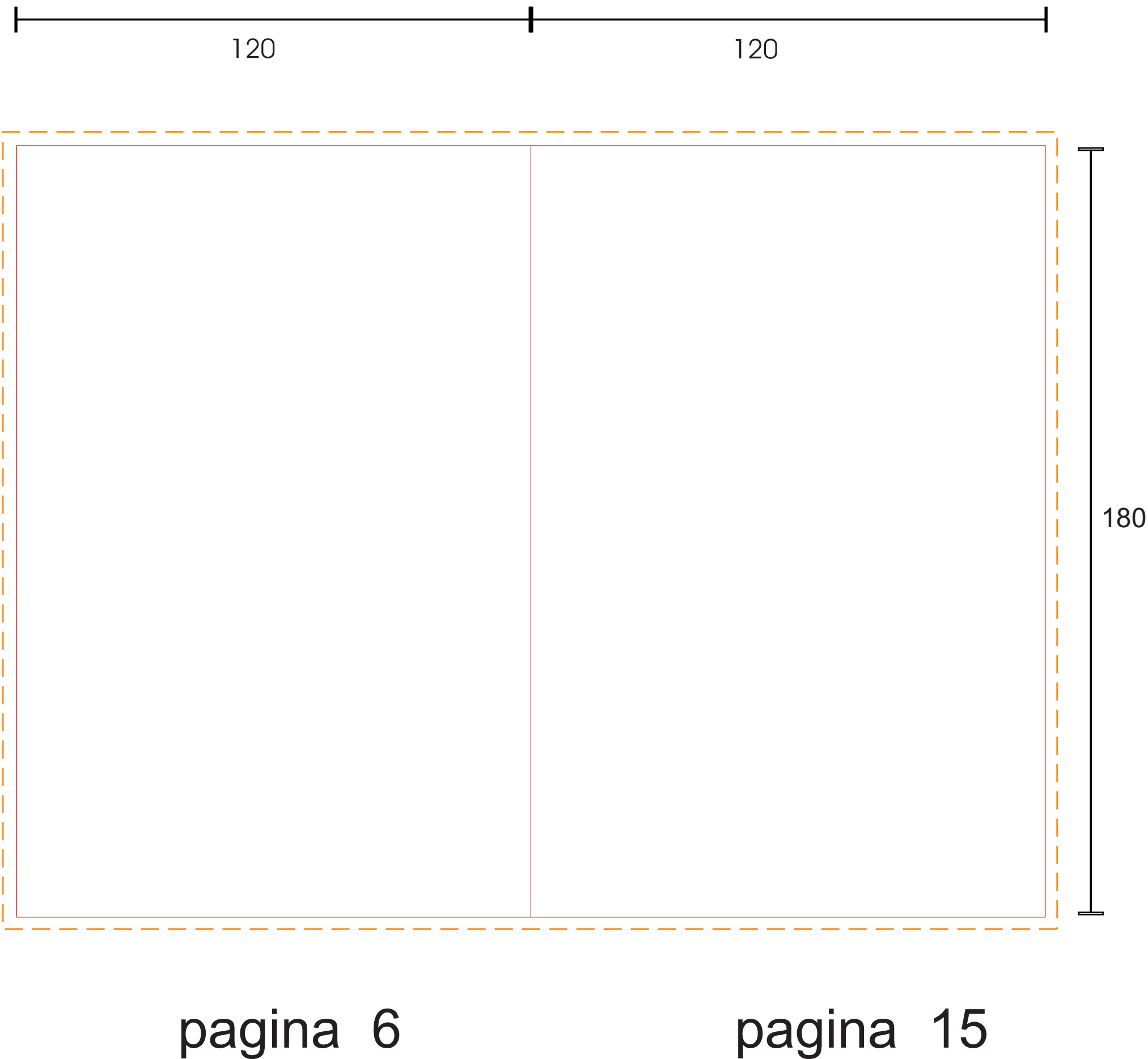
pagina 5

— Taglio

— Piega

— Quotatura

- - - - - Abbondanza per la grafica

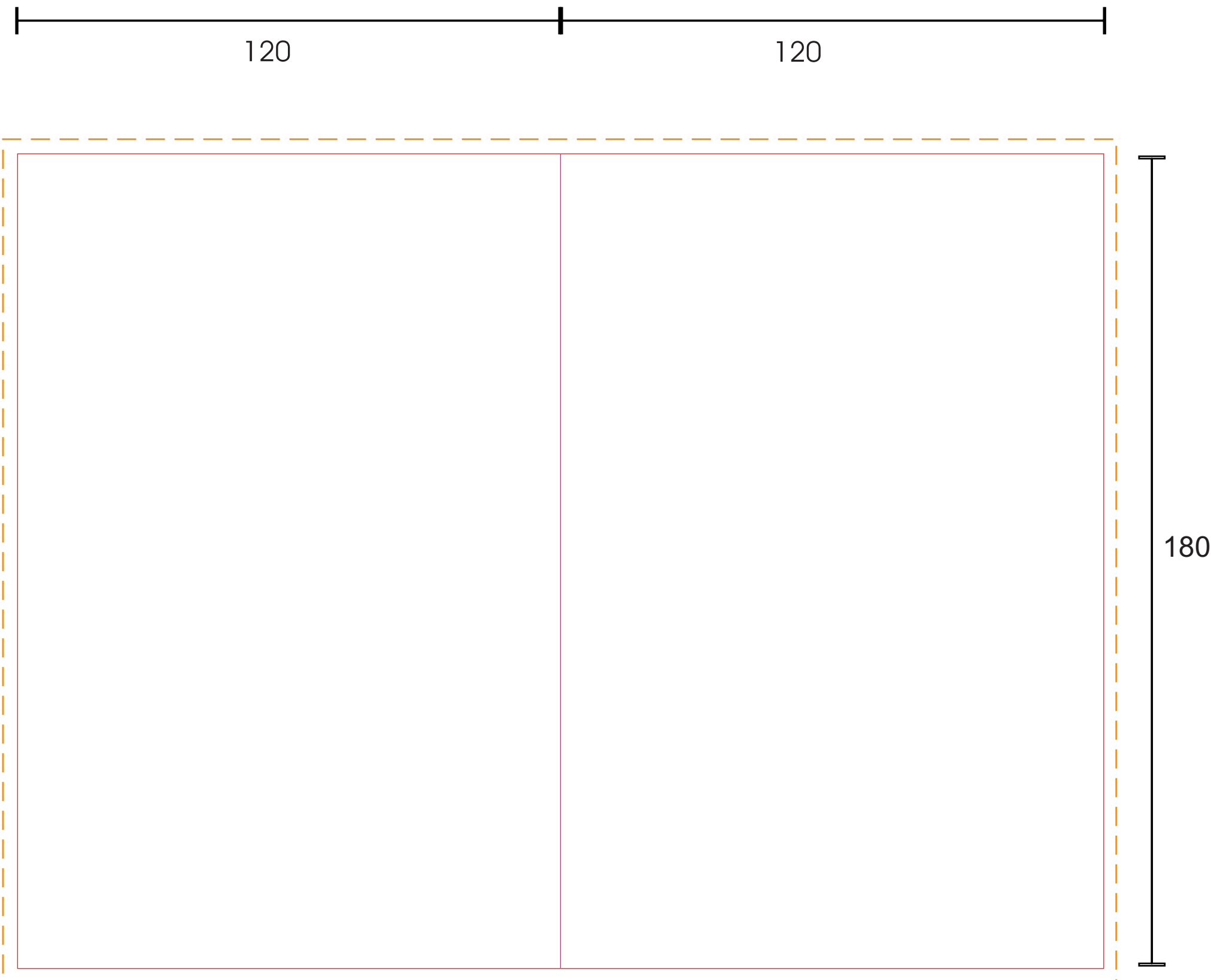


— Taglio

— Piega

— Quotatura

- - - - - Abbondanza per la grafica



pagina 14

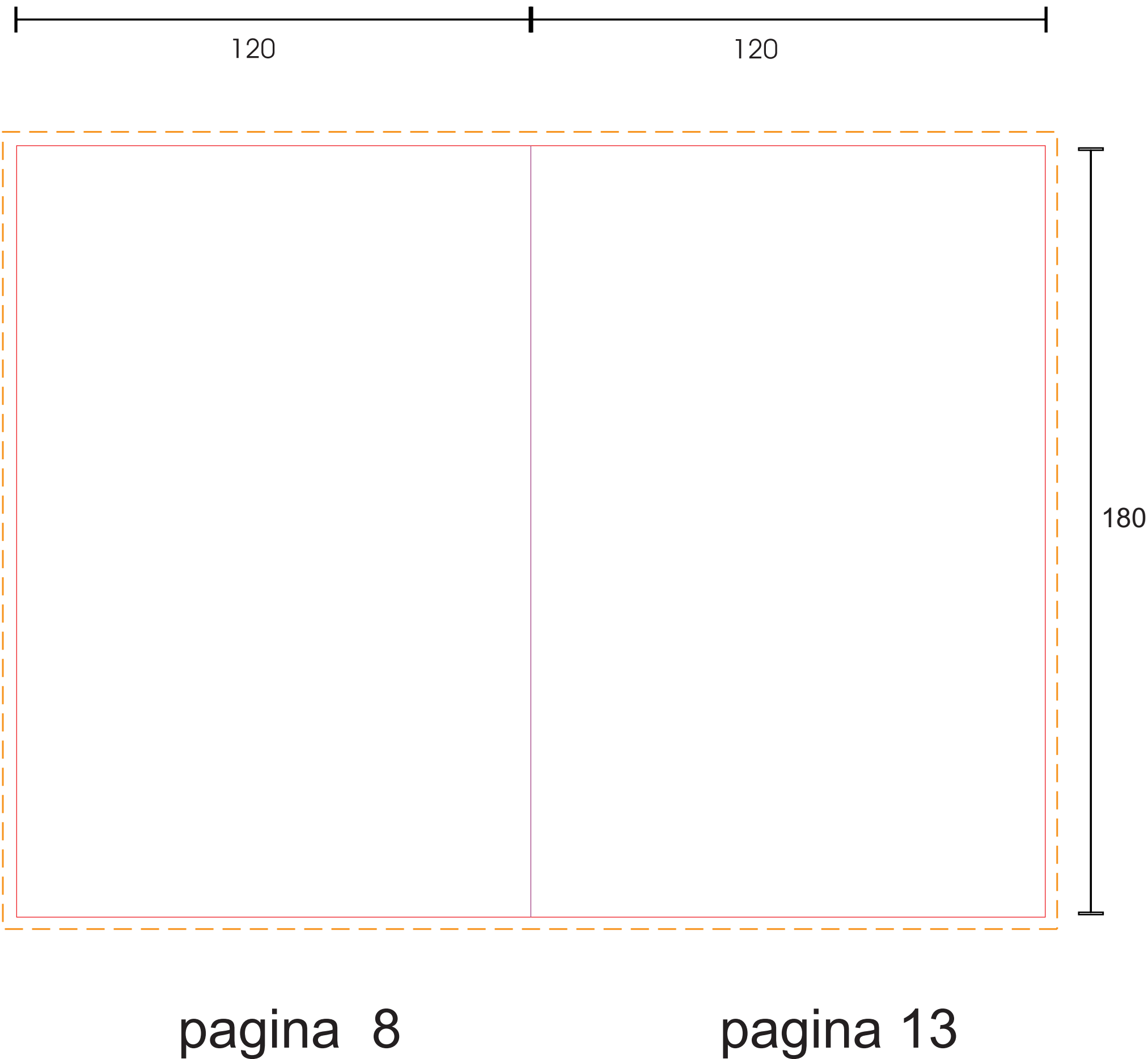
pagina 7

— Taglio

— Piega

— Quotatura

- - - - - Abbondanza per la grafica



120

120

180

pagina 8

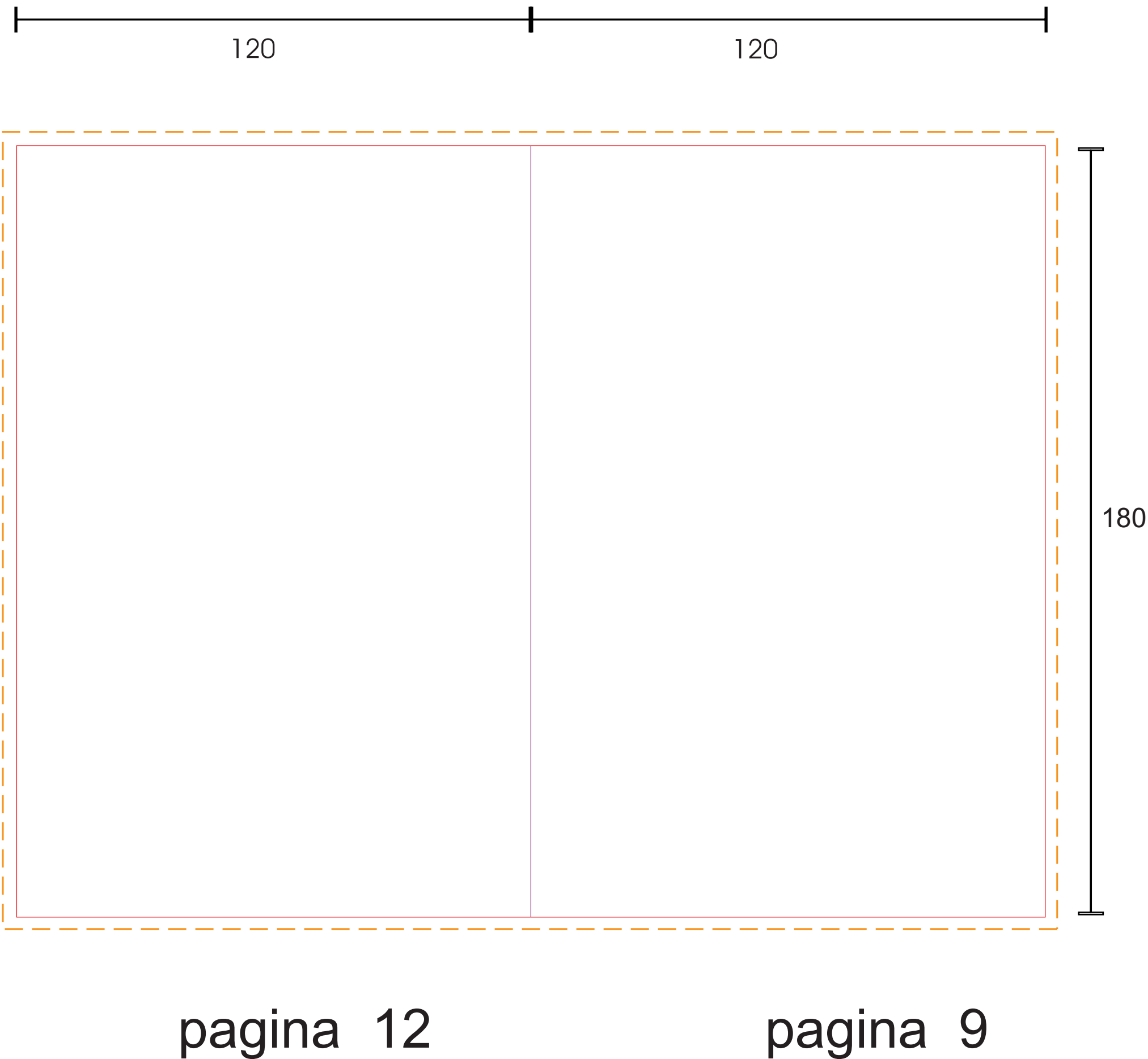
pagina 13

— Taglio

— Piega

— Quotatura

- - - - - Abbondanza per la grafica



— Taglio

— Piega

— Quotatura

- - - - - Abbondanza per la grafica

